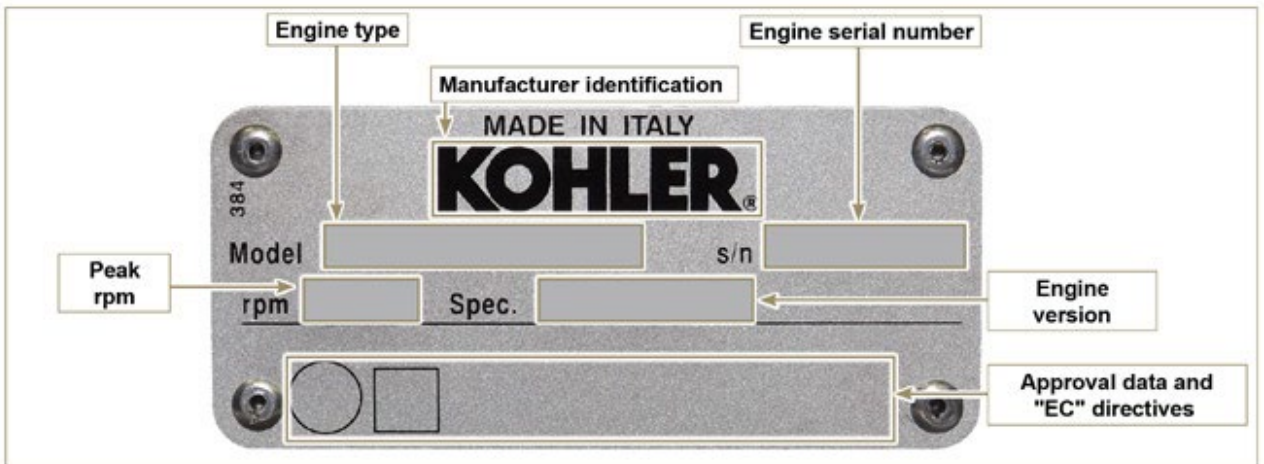
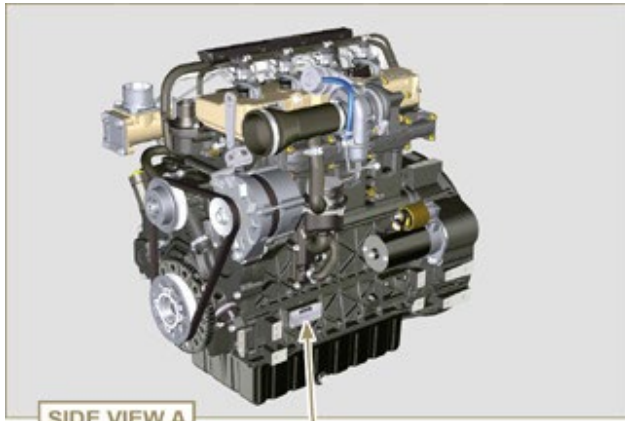
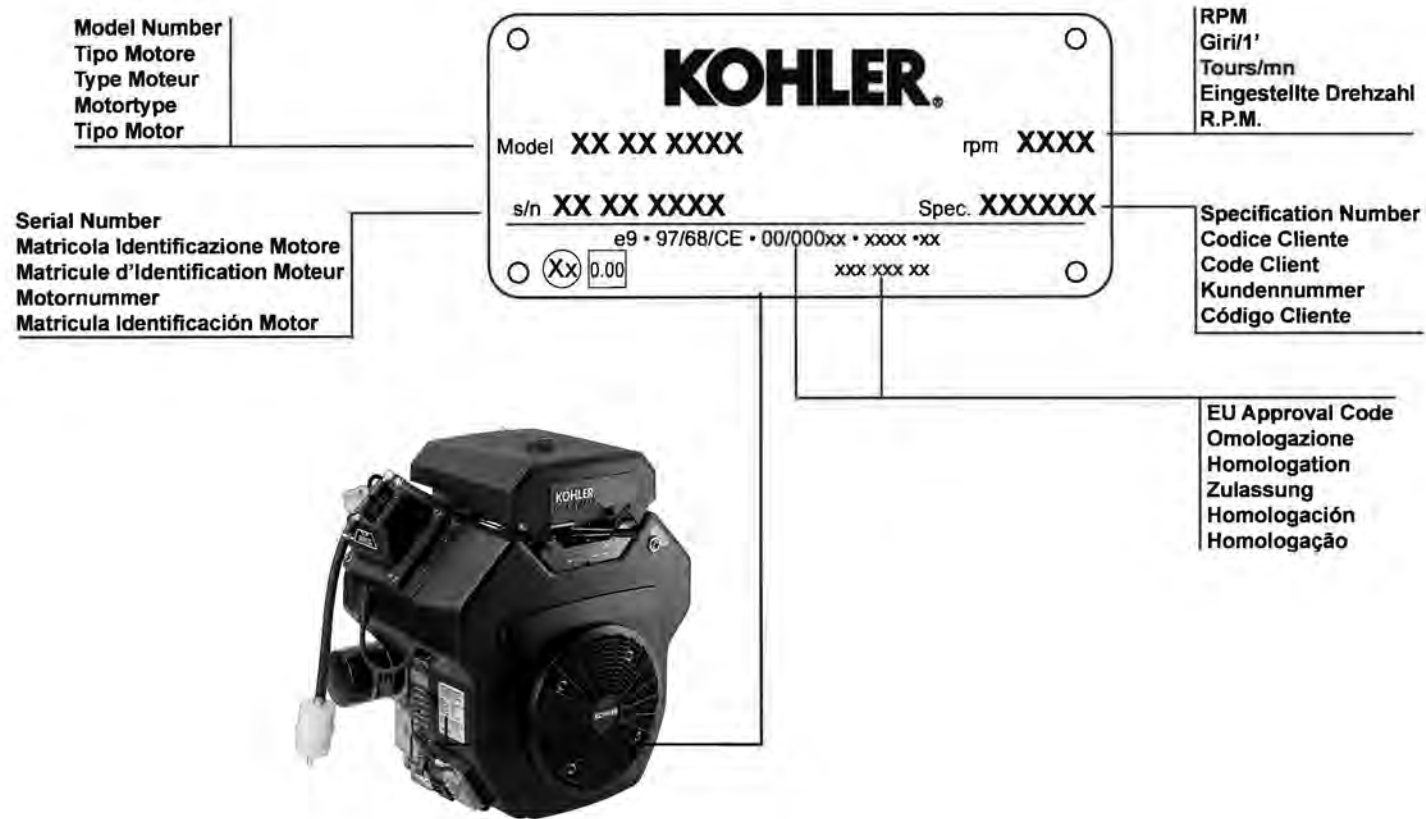


1.7 Manufacturer and motor identification data

The nameplate motor identification is find side **A** or side **B** .



**ENGINE IDENTIFICATION - IDENTIFICAZIONE MOTORE - IDENTIFICATION MOTEUR - IDENTIFIZIERUNGSDATEN - IDENTIFICACION DEL MOTOR - IDENTIFICAÇÃO DO MOTOR**



## ENGINE IDENTIFICATION NUMBERS

Kohler engine identification numbers (model, specification and serial) should be referenced for efficient repair, ordering correct parts, and engine replacement.

